

Line thrower

The IKAROS line thrower is used for casting a pilot line for cables and ropes in rescue operations at sea. It can be used between ships, from shore to ship or ship to shore, and for rescuing personnel.

The IKAROS line thrower is a robust device consisting of a waterproof plastic container with integral handle and trigger mechanism, a solid fuel rocket and 300 meters of line. To activate it, the user must remove a safety pin, hold the device steady and pull the trigger.

The IKAROS line thrower is approved globally and meets the latest SOLAS 74/96 regulations.

- Throws line 300 meters
- Easy to use
- Robust and waterproof
- Integral handle

Line thrower

Performance	Throws a line in calm wind
Length of line	300 m
Line diameter	4 mm
Line strength	2 kN
Dimensions	340 x 230 mm
Weight	4 kg
Ref. no.	34 61 00 Complete line thrower
Ref. no.	34 62 00 Replacement rocket
Ref. no.	34 63 00 Buoyant head
USCG no.	160.040/EC0575/MEDB00003R4
SOLAS MED B	MEDB00003R4

Line thrower replacement rocket

Each rocket has an integral igniter and includes instructions for easy installation.

Weight	650 g
Ref. no.	34 62 00

Line buoyant head

The IKAROS line buoyant head is screwed onto the front of the rocket within the IKAROS line thrower. When released, the buoyant head floats to ensure that the line can be easily located in the water.

Weight	170 g
Ref. no.	34 63 00



IKAROS

Swedish safety at sea since 1888

Man overboard (MOB) light and smoke signal

This distress signal is designed to be mounted vertically on the ship's bridge, with one on the port and one on the starboard side.

It should be attached behind or to the side of a lifebuoy at a minimum of five meters above the water line. When the lifebuoy is thrown overboard, the MOB is pulled with it and as it leaves its bracket, it automatically emits light and smoke to attract attention to the person in the water. On smaller vessels, it can be mounted on the wheelhouse bulkhead and launched manually.

The MOB light and smoke signal has a lithium battery and can be used as a day and night marker. It is approved globally and meets the latest SOLAS regulations.

- Attach to lifebuoy
- 2 hours light
- 15 minutes smoke
- Globally approved
- 60 meter drop test on water



Man overboard (MOB) light and smoke signal

	MOB MK IV light and smoke	MOB MK IV smoke marker
Performance	Light 2 cd > 2 hours	-
Smoke duration	> 15 min	> 15 min
Dimensions	200 x 500 mm	200 x 500 mm
Weight (including bracket)	approx. 5 kg	approx. 5 kg
Ref. no.	34 51 05	34 52 05
USCG no.	161.110/EC0575/MEDB000046Y (Light), 160.157/EC0575/MEDB000046X (Smoke)	
SOLAS MED B	MEDB000046Y (Light) MEDB000046X (Smoke)	



IKAROS

Swedish safety at sea since 1888



MARITIME SERVICES
• SAFETY DIVISION •

IMMERSION SUIT

- 1.PRODUCT DESCRIPTION:

The immersion suit fabric is made of neoprene foamed composite material and glued seams. According to its structural design, it can be mainly divided into two types: lifejacket must be worn and no lifejacket required. The garment is sealed with a watertight zipper to achieve the function of waterproof and heat preservation. The wearer's body temperature did not drop more than 2°C after immersing for 6h in a calm water flow of 0-2 °C.

- 2.PRODUCT PERFORMANCE PARAMETER:

No signs of damage after ten testing cycles of ambient temperature of -30°C and 65°C, such as shrinkage, cracking, swelling, decomposition or changes in mechanical properties.

After the demonstration, the test wearer can take out the immersion suit after leaving for 24 hours at a low temperature of -30°C without any help, and put it on within 2 minutes in a still water flow between 0°C and 2°C. After soaking for 6 hours, the body temperature should not be lower than its normal body temperature by 2°C. Immersion suits that do not require a life jacket must be equipped with a life jacket light that meets the requirements.



MARITIME SERVICES
• SAFETY DIVISION •

● 3.PRODUCT TECHNICAL STANDARD:

1974 SOLAS and its amendments, Chapter III, Articles 4, 7, 22, 32 and 34 . MSC.48 (66) amended by MSC.207 (81), MSC.218 (82) Chapters I and II of the LSA. MSC.81 (70) amended by MSC.226 (82), MSC.323 (89), Amended Recommendations for Life-saving Equipment Tests, Part 1, Section 3; Part 2, Section 2

● 4.SPECIFICATION/SIZE:

Model	Main material	Requirement	Suitable height & size
RSF-II	Neoprene	No need to wear a lifejacket	S: 1500-1650mm M:1650-1800mm L: 1800-1950mm XL:1950-2050mm
RSF-III	Neoprene	need to wear a lifejacket	S: 1500-1650mm M:1650-1800mm L: 1800-1950mm XL:1950-2050mm
RSF-III	Neoprene	need to wear a lifejacket	S: 1500-1650mm M:1650-1800mm L: 1800-1950mm XL:1950-2050mm
Child immersion suit	Neoprene	No need to wear a lifejacket	Suitable height: 1300-1500mm

● 5.INSTRUCTION:

Ichoose the suitable immersion suit based on your height. Unpack and unzip. First wear two trouser legs, pull the current-limiting zipper on the leg, then wear both arms, put on the hat, pull on the watertight zipper, and finally put on the wave shield and gloves.

● 6.VALIDITY:

(1). Check the validity (2).Air tightness check(700Pa-1400Pa)

● 7.PACKAGE:

Standard package: 1PCS per bag, 2PCS per carton Volume: 0.09m³ per carton

● 7.CERTIFICATE: CCS/EC/ZY

• SAFETY DIVISION •



MARITIME SERVICES

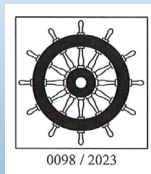
• SAFETY DIVISION •

Product manufactured by:  榮 RSC 歸



MARITIME SERVICES
 • SAFETY DIVISION •

Regulation (eu) 2017/306, items No. MED73.7. SOLAS 74 as amended regulation II-2710& X73,2000 HSC code7, FSS Code 3,IBC Code 14,IGC Code 14 and IMO MSC.17Circ.1499 EN 136 (1998) including AC(2003) and EN 137(2006)



MANUFACTURED BY 



RSY-150TS-1



INFLATABLE LIFEJACKET

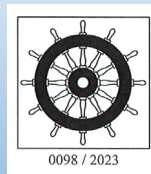
OPERATION INSTRUCTIONS

MANUFACTURED BY 



MARITIME SERVICES
 • SAFETY DIVISION •

Regulation (eu) 2017/306, items No. MED73.7. SOLAS 74 as amended regulation II-2710& X73,2000 HSC code7, FSS Code 3,IBC Code 14,IGC Code 14 and IMO MSC.17Circ.1499 EN 136 (1998) including AC(2003) and EN 137(2006)



MANUFACTURED BY 



INFLATABLE LIFEJACKET

OPERATION INSTRUCTIONS

MANUFACTURED BY 

CONTENTS

1.Safety attentions	1
2.Product introduction	2
3.Instructions for use	2
3.1 Check before use	
3.2 Donning instruction	
3.3 Inflation instruction	
3.4 Deflation instructions	
4. Storage	5
4.1 Storage conditions -	
4.2 Storage method	
4.3 Storage validity	
5. Maintenance	6
5.1 Checking	
5.2 Cleaning	
5.3 Drying	
6. Scrap processing	7
6.1 Scrap disposal	
6.2 Conditions for determining the product as scrap	
7. Performance indicators	7

1. SAFETY ATTENTIONS

- This user manual is only applicable to the inflatable lifejacket produced by our company.
- This inflatable lifejacket should only be used by personnel who have read the contents of this user manual.
- Do not use any damaged inflatable lifejacket.
- During repair and maintenance, be sure to use the spare parts provided by our company, otherwise it may cause function damage.

Definition of the signal icon used in this user manual

The following ICONS are used in this user manual to remind users not to put their safety, inflatable lifejacket at risk in situations requiring special attention or during operation.



Warning
Point to a potentially dangerous situation that, if not avoided, can result in death or serious injury.



Notice
Indicates a potentially dangerous situation that, if not avoided, can result in physical injury or product damage.



Note
Other information on how to use inflatable lifejacket.

2. PRODUCT INTRODUCTION

The inflatable lifejacket is suitable for life-saving use of all kinds of people offshore, coast and inland rivers, equipped with whistle and life jacket light, it is essential personal life-saving equipment for sailing ships and offshore platforms.

3. INSTRUCTIONS FOR USE

① Check before use

Check if the inflatable lifejacket is in good condition

Check whether the air chamber and other accessories of the inflatable lifejacket are in good condition, once any signs of damage or missing is found, contact with manufacturer or a local authorized service center immediately.

② Check if the inflation device is in good condition

Check whether the inflation device (Manual & automatic integration and manual) is in the correct condition, for details, please refer to the inspection instructions for parts of the inflation device near it.

③ Check if the CO2 cylinder is in good condition

Unscrew the CO2 cylinder from the inflation device, check whether the specifications and weight of the CO2 gas cylinder are correct first, then observe whether the sealing cap of cylinder is intact to ensure the integrity of the CO2 cylinder.

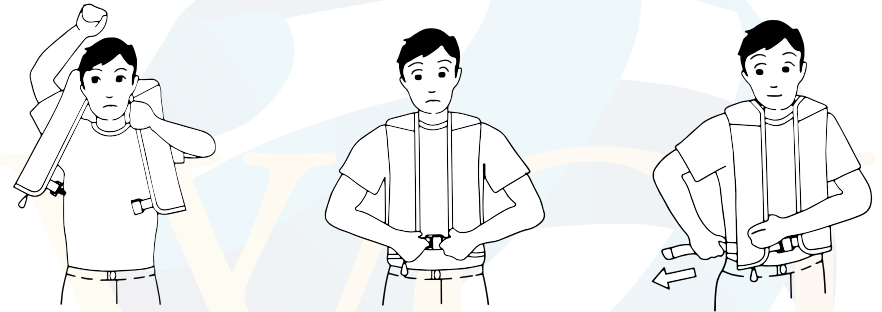


Additional instructions of CO2 cylinder

• Before install CO2 cylinder, If the inflation device is not installed correctly, the CO2 cylinder will be filled immediately.

- The CO2 cylinder can only be used one time and should be replaced immediately after use.
- If the protective coating on the outside of the cylinder is damage such as rust or other caused by inappropriate storage environment, it should be replaced immediately.

3.2 Donning instruction



- ① Observe the inflatable lifejacket before wearing it, and make sure the front side toward front when wearing it.
- ② Hang the inflatable lifejacket on one shoulder first, put the arm through the strap, and then pass the other arm through the strap.
- ③ Fasten the buckle.
- ④ Adjust the strap to a suitable position and tighten it.
- ⑤ If there is a crotch strap, pass it from the crotch to the front and insert the strap buckle.
- ⑥ Tighten the crotch strap to suitable position.



The ambient temperature of the inflatable lifejacket is -30°C~+65°C.

3.3 Inflation instruction

- ① Once the inflatable lifejacket is launching in water, the automatic inflation device will automatically inflate within 5 seconds to expand the air chamber.
- ② The inflatable lifejacket can also be used by pulling the manual pull arm to inflate the air chamber before launching it into the water.



Inflatable lifejacket are inflated with CO2 gas in the cylinder. It is absolutely forbidden to inflate with CO2 cylinders after mouth-blowing inflation (using CO2 cylinders after mouth-blowing inflation will destroy the air chamber).

- ③ If the air chamber becomes soft due to the lack of CO2, the air chamber can be kept sufficient buoyancy by blowing the oral tube.



Mouth blowing method:

The oral tube is generally located on the left side of air chamber, straighten the oral tube and put it into mouth, blowing it until the air chamber hardens.

- ④ Inflation under freezing conditions
If the temperature is lower than -40°C, the air chamber will become soft, in addition to be inflated by the inflation device, it also needs to be inflated by oral tube.

3.4 Deflation instructions

To release the CO2 gas in the air chamber, please remove the cap of the oral tube first, then insert the cap into the oral tube in the reverse direction, press the valve core lightly to deflate, and then close the cap after deflation.

4. STORAGE

4.1 Storage conditions

Inflatable lifejacket should be stored in a low - temperature, ventilated and dry environment. It is strictly forbidden to expose them to high temperatures or long-term exposure to the hot sun. Avoid contact with acids, alkalis, salts and other corrosive substances and oils to prevent damage to the inflatable life jackets.

4.2 Storage method

- Inflatable lifejacket should be folded or hung as it was delivered.
- It should be stored in the original plastic bag or other tight bag or box.
- If stored in a soft bag, do not stack inflatable lifejacket on top of each other to avoid excessive weight or high pressure that may damage the inflatable lifejacket.
- If stored in a box, ensure the volume in the box is sufficient so that inflatable lifejacket can be easily accommodated without pushing.



Inflatable lifejacket can't be used as cushions, heavy pressure is strictly prohibited.

4.3 Storage validity

The quality guarantee period of inflatable lifejacket is three years under the storage conditions comply with the standard.

5. MAINTENANCE

5.1 Checking

Checking should include below steps:

- Visual inspection of outer and inner.
- Check whether the surface of the air chamber, outer cloth, seam, and attachments are damaged.



If any defects / faults are found, should be replaced in time.

- Inflatable lifejacket should be sent to the manufacturer or a locally approved service center for inspection per year.

5.2 Cleaning

- ① If there is dirt on the inflatable lifejacket, it should be placed flat on a clean operating table with a soft brush or soft cloth dipped in a neutral detergent to gently scrub the dirty area, and then rinse with clean water until it is clean.



Be careful not to scratch or damage the material.

- ② Do not dry clean inflatable lifejacket.

5.3 Drying

- ① Hang the cleaned inflatable lifejacket on a soft, non-sharp -angled hanger and place it in a dry, ventilated place to dry.
- ② If a large dryer is used for drying, the drying temperature should not exceed 60°C, and at the same time, prevent heat accumulation from damaging the life jacket. It is strictly forbidden to use higher temperatures to force the heating to dehumidify.

6. SCRAP PROCESSING

6.1 Scrap disposal

Discarded inflatable lifejacket should be disposed of in accordance with Fabric/plastic waste disposal regulations.

6.2 Conditions for determining the product as scrap

When inflatable lifejacket meets one or more of the following standards, it should be scrapped:

Abandonment conditions	Description
Lifespan	No matter how the inflatable lifejacket is used, although it may pass relevant inspections, it must be abandoned when it has been used for 6 years.
Can not repair	The air chamber is damaged or other parts are damaged so big, which makes it impossible / unrepairable.
Chemical degradation	High-frequency use or improper cleaning or storage can lead to premature chemical degradation of the material.

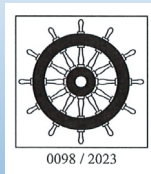
7. Performance indicators

Product Category	Inflatable Lifejacket (Adult)	Inflatable Lifejacket (Adult)	Inflatable Lifejacket (Adult)
Model	RSY-150TS-1 RSY-150TS-2	RSY-2755	RSY-150C
Buoyancy	≥ 150 N	≥ 275 N	≥ 150 N
Type	Two compartments	Two compartments	Two compartments
Inflation time	≤ 5 s	≤ 5 s	≤ 5 s
CO2 cylinder	33 g x 2	60 g x 2	33 g x 2
Suitable Weight	≥ 43 Kg	≥ 43 Kg	15 Kg ~ 43 Kg
Suitable Height	≥ 155 cm	≥ 155 cm	100 cm ~ 155 cm
Warranty	Inflatable lifejacket is three years. CO2 Cylinder is also three years. The automatic inflatable tablets is one years.		



MARITIME SERVICES
 • SAFETY DIVISION •

Regulation (eu) 2017/306, items No. MED73.7. SOLAS 74 as amended regulation II-2710& X73,2000 HSC code7, FSS Code 3,IBC Code 14,IGC Code 14 and IMO MSC.17Circ.1499 EN 136 (1998) including AC(2003) and EN 137(2006)



MANUFACTURED BY 



INFLATABLE LIFEJACKET

OPERATION INSTRUCTIONS



MARITIME SERVICES
• SAFETY DIVISION •

LIFEBUOY LIGHT

RSQD-EX

◆ 1.PRODUCT DESCRIPTION:

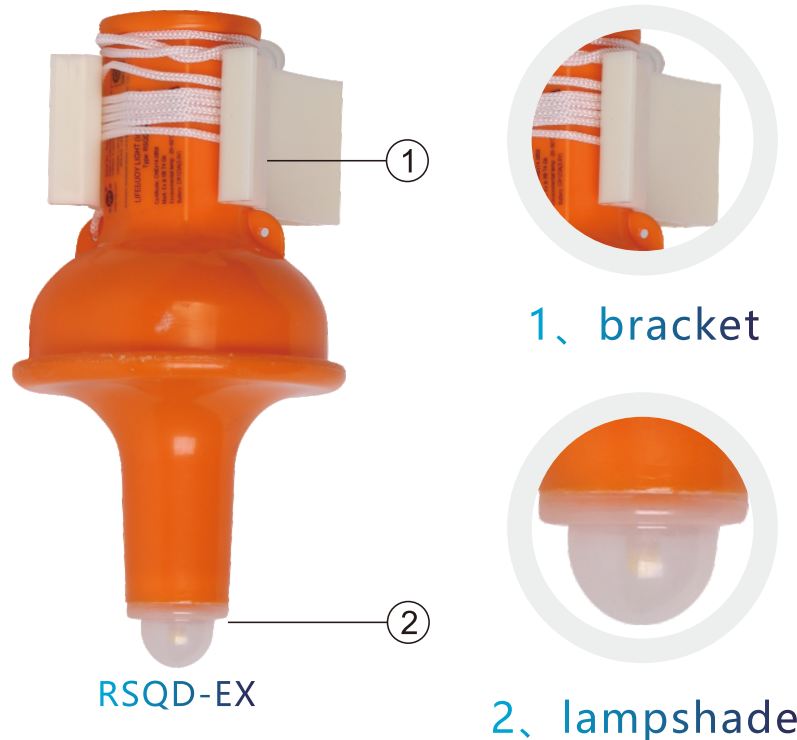
Lifebuoy self-igniting light (RSQD-EX) is designed to explosion-proof type, the light is completely enclosed, use reed switch. The string of switch is fixed on the lifebuoy light bracket. When the life buoy light detach from the mounting bracket, reed switch is pulled out, light is turned on. The light can provide at least 2cd intensity and more than 2 hours of flashes, provide a strong guarantee for search and rescue at sea.

◆ 2.PRODUCT PERFORMANCE PARAMETER:

There were no signs of damage after ten cycles at -30 ° C and +65 ° C ambient temperature, such as shrinkage, cracking, swelling, decomposition or changes in mechanical properties.

It can be used normally at an ambient temperature of -1 ° C to +65 ° C.

Flash frequency:50-70 times/min



MARITIME SERVICES
• SAFETY DIVISION •

Model	Switch method	Power source	Light source
RSQD-EX	Reed switch	Lithium battery	LED
luminous intensity	Flare time	Dimension	Weight
≥2.0cd	≥2h	188*122*100mm	≤315g

◆ **3.PRODUCT TECHNICAL STANDARD:**

SOLAS 1974 and Amendments, Chapter III, Articles 4, 7, 22, 26, 32 and 34, MSC.48(66) amended by MSC.207(81)),LSA Chapters I and II, MSC.81(70) amended by MSC.200(80), MSC.226(82), and MSC.323(89), part 1, section 10.

◆ **4.OPERATION:**

Tie the lifebuoy light to lifebuoy and install it on the bracket inverted,and also tie the string of reed switch to the bracket.When the life buoy light detached from the mounting bracket,reed switch is pulled out,light is turned on.Lifebuoy light floats automatically on the surface of water and flash with white color

◆ **5.VALIDITY:** 5 years

◆ **6.PACKING SPECIFICATION:**

1pc/box,16boxes/Carton Volume:0.053m³/Carton

◆ **7.DISPOSAL:**

Discarded expired products shall be handled in accordance with the relevant policies of the local environmental protection department.

◆ **8.PACKING SPECIFICATION:** CCS/EC



MARITIME SERVICES

• SAFETY DIVISION •

Product manufactured by:  榮 歸



◆ 1.PRODUCT DESCRIPTION:

The lifebuoy is made of high quality HDPE which through blow molding, filled with rigid polyurethane material, and selected reflective materials comply with SOLAS standards to process.

◆ 2.PRODUCT PERFORMANCE PARAMETER:

There were no signs of damage after ten cycles at -30 ° C and +65 ° C ambient temperature, such as shrinkage, cracking, swelling, decomposition or changes in mechanical properties.

Drop height: 80 meters

Model	Weight	Buoyancy	Diameter of handle rope	Size	Tolerance
RS5555-I	≥2.5kg	≥14.5kg	≥9.5mm	Outside diameter:720mm Inside diameter:440mm	±20mm
RS5555-II	≥4.3kg	≥14.5kg	≥9.5mm	Outside diameter:720mm Inside diameter:440mm	±20mm

Buoyancy:An iron block no less than 14.5kg is hung on lifebuoy,it should float in the water and keep floating for 24 hours.



Lifebuoy



1、 Handle rope of lifebuoy



2 Reflective tape



◆ **3.PRODUCT TECHNICAL STANDARD:**

SOLAS 1974 and Amendments, Chapter III, Articles 4, 7, 22, 26, 32 and 34,
MSC.81(70) amended by MSC.200(80),MSC.226(82),part 1,section 10,part 2, section 3
MSC.48(66) amended by MSC.207(81)),LSA Chapters I and II,
GB 4302-2008 《Lifebuoy》

◆ **4.OPERATION:**

(1) The thrower holds the handle rope of lifebuoy in one hand and throw the lifebuoy in the vicinity of the person who drop into water with the other hand.Be careful don't throw the lifebuoy on the person who drop into water.
(2)When used with lifebuoy floating lifeline or rescue ring,hold the lifeline or rescue ring and throw in the vicinity of the person who seek help.

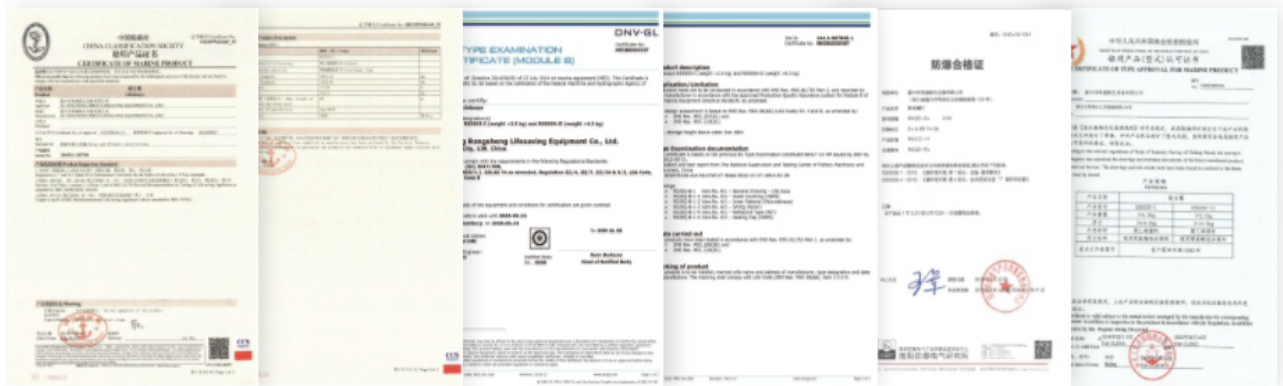
◆ **5.VALIDITY:** If the lifebuoy broken,pls replace it in time.

◆ **6.PACKING SPECIFICATION:** 5pcs/Bag Volume:0.35m³/Bag

◆ **7.DISPOSAL:**

Discarded expired products shall be handled in accordance with the relevant policies of the local environmental protection department.

◆ **8.CERTIFICATE:** CCS/EC/RS



MARITIME SERVICES

• SAFETY DIVISION •

Product manufactured by: 榮  歸



LIFEJACKET LIGHT

RSYD-A2

◆ 1.PRODUCT DESCRIPTION:

The RSYD-A2 lifejacket light is an emergency position indicators. Power is lithium battery and LED as light source. It can be fixed on a variety of life jackets to indicate the location of the person who drop into water.

When the water flow switch of the lifejacket light touches water, light will turn on automatically and flash continuously, indicate the location of the person who drop into water to improve the success rate of rescue. The light also has a manual close button allows it to be turned off manually.

The product has the advantages of small volume, light weight, long illumination time, good stability, and easy to install etc.

◆ 2.PRODUCT PERFORMANCE PARAMETER:

There were no signs of damage after ten cycles at -30 ° C and +65 ° C ambient temperature, such as shrinkage, cracking, swelling, decomposition or changes in mechanical properties.

It can be used normally at an ambient temperature of -30 ° C to +65 ° C.

Model	Light source	Flare time	luminous intensity	Power source	Flash frequency
RSYD-A2	LED	≥8h	≥0.75cd	Lithium battery	50-70flashes/min



RSYD-A2



RSYD-A2



◆ **3.PRODUCT TECHNICAL STANDARD:**

SOLAS 1974 and Amendments, Chapter III, Articles 4, 7, 22, 26, 32 and 34, MSC.48(66) amended by MSC.207(81)),LSA Chapters I and II, MSC.81(70) amended by MSC.200(80), MSC.226(82), and MSC.323(89), part 1, section 10.

◆ **4.OPERATION:**

When the water flow switch of the lifejacket light touches water,light will turn on automatically and flashes 50-70 times/min.

◆ **5.MAINTENANCE:**

(1)Do not touch the switch with hands or other wet objects during storage to avoid accidental activation,air humidity and water vapor will not activate the light.Don't worry about the light activate accidentally so as long as it is stored properly.

(2)Check whether the appearance of the light is damaged,if there is a feature affects its function, it should be judged if a new product need to be replaced.

(3)Immerse the light into water,it should turn on automatically.Light should be closed normally by pressing the manual switch.After test, please also dry the water flow switch,and light will not turn on by pressing the manual switch.If the water flow switch does not be dried,light will still turn on.Please dry it in this case.Test qualified,the light is regard as in a valid normal state.

◆ **6.VALIDITY:** 5 years

◆ **7.PACKING SPECIFICATION:** 200pcs/Carton Volume:0.036m³/Carton

◆ **8.DISPOSAL:**

Discarded expired product shall be handled in accordance with the relevant policies of the local environmental protection department.

◆ **9.CERTIFICATE:** CCS/EC



MARITIME SERVICES

• SAFETY DIVISION •

Product manufactured by:  



BOETTA Orange Smoke



ART. S.01

DESCRIZIONE

Buoyant Orange Signals , approved in conformity to the last updating of the normative: SOLAS 74/96.

MED 96/98 EC

Directive 2012/32/EU

IMO Res. MSC. 81 (70) as amended.

Certificato CE N. 2465.PYR.18.0007

Registrazione N. 2465-P1-18002

APPLICATION

For daylight distress signaling purposes on ship, lifeboats, life rafts and for pleasure craft.

DESIGN

The case is made of corrosion-resistant steel.

USAGE INSTRUCTIONS

Remove the red lid

Pull the loop

Throw the signal overboard

TECHNICAL SHEET

Height: 120 mm

Diameter: 83,5 mm

Weight.: 480 gr.

Smoke duration time: > 3 min..

Color: Orange

NEC: 220 gr



ALBATROSS S.r.l.

Sede legale: Viale A. Gramsci, 13 - 80122 Napoli • Stabilimento: Località Fellino - 80030 Roccarainola (NA)

Tel.: +39-081-8265444 • Fax: +39-081-8261140 • Capitale Sociale: € 115.000,00 int. vers.

Partita IVA • Codice Fiscale • Registro Imprese di Napoli: 07171460632 • C.C.I.A.A. NA: 587719 R.E.A.

www.albatrossrl.com • info@albatrossrl.com



HAND FLARE II



ART.: S.02

DESCRIPTION

Hand Flare red light , approved in conformity to the last updating of the normative:
SOLAS 74/96
MED 96/98 EC
Directive 2012|32|EU
IMO Res. MSC. 81 (70) as amended.
Certificate CE 2465.PYR.18.003
Registrazione Numero : 2465-P1-18001

APPLICATIONS

For night - time distress signaling purposes on ships, lifeboats, life rafts and for pleasure craft.

DESIGN

Tube is made of corrosion-resistant steel with a shockproof plastic handle.

USAGE INSTRUCTIONS

Extend the handle and open the lid
Pull the loop. The flare ignites after 2 sec. delay.
Hold the signal upward, overboard and downwind

TECHNICAL SHEET

Height : 235 mm
Diameter : 25 mm
Weight : 200 gr.
Burning time : > 60 sec.
Light intensity : 15.000 cd
NEC.: 65 gr.



ALBATROSS S.r.l.

Sede legale: Viale A. Gramsci, 13 - 80122 Napoli • Stabilimento: Località Fellino - 80030 Roccarainola (NA)
Tel.: +39-081-8265444 • Fax: +39-081-8261140 • Capitale Sociale: € 115.000,00 int. vers.
Partita IVA • Codice Fiscale • Registro Imprese di Napoli: 07171460632 • C.C.I.A.A. NA: 587719 R.E.A.
www.albatrossrl.com • info@albatrossrl.com



SHUTTLE Parachute Rocket



ART. S.03

DESCRIPTION

Parachute rocket to red light , approved in conformity to the last updating of the normative:
SOLAS 74/96
MED 96/98 EC
Directive 2012|32|EU
IMO Res. MSC. 81 (70) as amended.
Certificate CE 2465.PYR.18.008
Registration Number 2465-P2-18003

APPLICATIONS

For nightlight distress signaling purposes on ship, lifeboats, life rafts and for pleasure craft.

DESIGN

The launching tube is made of resistant plastic to ensure protection in severe marine weather conditions

USAGE INSTRUCTIONS

Remove bottom lid using the pin
Release the trigger, positioning it outward
Grip the tube with both hands. Pushing the trigger against outer casing

TECHNICAL SHEET

Height: 261 mm
Diameter: 50 mm
Weight: 410 gr.
Flare ejection height: >300 mt.
Burning time: > 40 sec.
Light intensity: Red: 30.000 cd
NEC.: 150 gr.



ALBATROSS S.r.l.

Sede legale: Viale A. Gramsci, 13 - 80122 Napoli • Stabilimento: Località Fellino - 80030 Roccarainola (NA)
Tel.: +39-081-8265444 • Fax: +39-081-8261140 • Capitale Sociale: € 115.000,00 int. vers.
Partita IVA • Codice Fiscale • Registro Imprese di Napoli: 07171460632 • C.C.I.A.A. NA: 587719 R.E.A.
www.albatrossrl.com • info@albatrossrl.com



SELF-CONTAINED POSITIVE PRESSURE AIR BREATHING APPARATUS

◆ 1.OVERVIEW:

Self-contained positive pressure air breathing apparatus is mainly composed of high-pressure cylinder, cylinder valve, pressure reducer, quick connector, air supply valve, full-face mask, pressure gauge, alarm and back plate, etc.

◆ 2.PERFORMANCE PARAMETERS:

After ten cycles of ambient temperature of -30 °C and + 65 °C, there are no signs of damage, such as shrinkage, cracking, swelling, decomposition, or changes in mechanical properties.

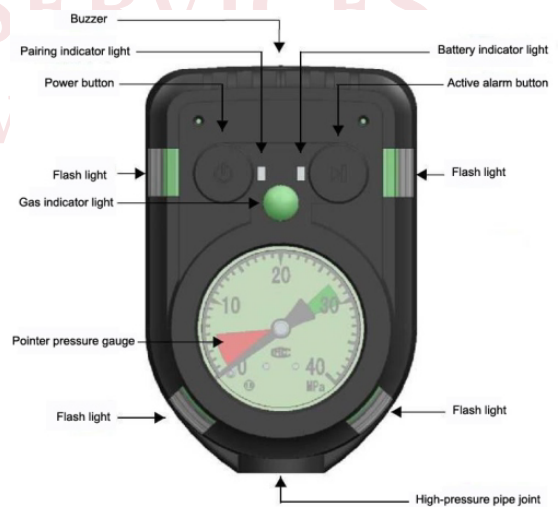
Working environment: -30 °C ~ + 65 °C, Relative humidity 0 ~ 100%,

Atmospheric pressure 70Kpa ~ 125Kpa

Model	Cylinder material	Cylinder volume	Gas storage capacity	Working hours	Working pressure
RHZK6/30	Alloy steel	6L	1800L	55 - 60min	300bar
RHZK6.8/30	Carbon fiber composite	6.8L	2040L	60-65min	300bar



Air breathing apparatus



Electronic pressure gauge



- ◆ **3. TECHNICAL STANDARD:**
1974 SOLAS and its amendments, Chapter II-2, Article 10
GB 124-2013 positive pressure air apparatus
MSC.98 (73) International Fire Safety System Code
- ◆ **4. INSTRUCTION:**
(1) When wearing an air apparatus, disconnect the quick connector first (to prevent damage to the full face mask when wearing the air apparatus), then put the air apparatus in the back (with the cylinder valve below) and adjust it according to your figure.
(2) Connect the quick connector and lock it, and place the full face in front so that you can wear it any time.
- ◆ **5. VALIDITY:** Go to a qualified organization for maintenance once a year, and continue to use after the product is qualified.
- ◆ **6. PACKING SPECIFICATION:**
Standard package: 1 set / carton Volume: 0.11m³ / carton
- ◆ **7. CERTIFICATE:** Discarded expired products should be handled in accordance with the relevant policies of the local environmental protection department.
- ◆ **8. CERTIFICATE:** CCS/EC



MARITIME SERVICES

• SAFETY DIVISION •

Product manufactured by: 榮 RONGGEN 歸

WHELEED 135L FOAM FIRE EXTINGUISHER

- Model: HY -F135
- Capacity : 135L
- Body Diameter : 406mm
- Overall Height : 1420mm
- Width : 530 mm
- Depth : 640 mm
- Type : Pressure storage type
- Fire Rating : A ☒ B
- Approx discharge time : > 120s
- Working temp.range : 0☒ -+60☒
- Extinguish agent : AFFF Foam
- Working pressure : 12Bar (Working pressure 20 ☒)
- Test pressure : 27bar
- Burst pressure : 48.6Bar
- Manufactured&Certified to :
- EN 1866 -1 : 2007 ; EN 1866 -2:2014
- Approval : MED



WHEELED 45L FOAM FIRE EXTINGUISHER

- Model: HY -F45
- Capacity : 45L
- CO2 Cartridge :1.25kg
- Body Diameter : 300mm
- Overall Height : 1160mm
- Width : 450 mm
- Depth : 500 mm
- Fire Rating : A B
- Approx discharge time : 88s
- Working temp.range : 0 \square +60 \square
- Extinguish agent : AFFF Foam
- Working pressure : 12Bar (Working pressure 20)
- Test pressure : 27bar
- Burst pressure : 48.6Bar
- Manufactured&Certified to : EN 1866 -1 : 2007 ; EN 1866 -2:2014
- Approval : MED



PORTABLE 12KG DRY POWDER FIRE EXTINGUISHER

- Model: HY -P12
- Capacity : 12kg
- Cylinder diameter : 184mm
- Overall height : 640mm
- Type : Pressure storage type
- Fire rating : 55A 233B C
- Approx discharge time : 32s
- Working temperature range : -30° +60°
- Extinguish agent : ABC Dry powder
- Working pressure : 14Bar at 20 °
- Test pressure : 27bar
- Burst pressure : ≥55Bar
- Manufactured&Certified to : BS EN 3 -7: 2004 + A1: 2007, BS EN 3 -8: 2021 and
BS EN 3 -10: 2009
- Approx full weight : 18.28 kg
- Approval : MED



PORTABLE 9L WATER FIRE EXTINGUISHER

- Model: HY -W9C
- Capacity : 9L
- CO2 Gas cartridge : 60g
- Cylinder diameter : 184mm
- Overall height : 590mm
- Type : Cartridge operated type
- Fire rating : 21A
- Approx discharge time : 50s
- Working temperature range : +5°C - +60°C
- Extinguish agent : water
- Working pressure : 12Bar at 20 °C
- Test pressure : 27bar
- Burst pressure : ≥55Bar
- Manufactured & Certified to : BS EN 3 -7: 2004 + A1: 2007, BS EN 3 -8: 2021 and
BS EN 3 -10: 2009
- Approx full weight : 14.50kg
- Approval : MED



PORTABLE 6L WATER FIRE EXTINGUISHER

- Model: HY -W6C
- Capacity : 6L
- CO2 Gas cartridge : 55g
- Cylinder diameter : 162mm
- Overall height : 505mm
- Type : Cartridge operated type
- Fire rating : 13A
- Approx discharge time : 30s
- Working temperature range : +5☐ -+60☐
- Extinguish agent : water
- Working pressure : 12Bar at 20 ☐
- Test pressure : 27bar
- Burst pressure : ≥55Bar
- Manufactured&Certified to : BS EN 3 -7: 2004 + A1: 2007, BS EN 3 -8: 2021 and
BS EN 3 -10: 2009
- Approx full weight : 10.450kg
- Approval : MED



PORTABLE 5KG CO₂ FIRE EXTINGUISHER

- Type : WN/M5
- Extinguisher agent: CO₂
- Capacity : 5KG
- Cylinder volume:7.5L
- Cylinder height: 655mm
- Extinguisher weight:14.8KG
- Temperature range : -300C ~+600C
- Work pressure : 169.3bar
- Hydrotest pressure : 250bar
- Cylinder material : 34CrMo4
- Fire class : 89B
- Certificate: DNV GL MED



PORTABLE 2KG DRY POWDER FIRE EXTINGUISHER

- Model: HY -P2
- Capacity : 2kg
- Cylinder diameter : 110mm
- Overall height : 385mm
- Type : Pressure storage type
- Fire rating : 13A 70B C
- Approx discharge time : 12s
- Working temperature range : -30 \square +60 \square
- Extinguish agent : ABC Dry powder
- Working pressure : 14Bar at 20 \square
- Test pressure : 27bar
- Burst pressure : \geq 55Bar
- Manufactured&Certified to : BS EN 3 -7: 2004 + A1: 2007, BS EN 3 -8: 2021 and
- BS EN 3 -10: 2009
- Approx full weight : 3.5kg
- Approval : MED



PORTABLE 6KG DRY POWDER FIRE EXTINGUISHER

- Brand : HWAYAN - F-POWER
- Model: HY -P6
- Capacity : 6kg
- Cylinder diameter : 150mm
- Overall height : 530mm
- Type : Pressure storage type
- Fire rating : 43A 233B C
- Approx discharge time : 17s
- Working temperature range : -30℃ -+60℃
- Extinguish agent : ABC Dry powder
- Working pressure : 14Bar at 20 ℃
- Test pressure : 27bar
- Burst pressure : ≥55Bar
- Approx full weight : 9.0kg
- Approval : MED



WHEELED 50KG DRY POWDER FIRE EXTINGUISHER

- Model: HY -P50
- Capacity : 50kg
- Cylinder diameter : 300mm
- Overall height : 1160mm
- Width : 450mm
- Depth : 500 mm
- Type : Pressure storage type
- Fire rating : A , B
- Approx discharge time : 95s
- Working temperature range : -30°C - +60°C
- Extinguish agent : ABC Dry powder
- Working pressure : 14Bar at 20 °C
- Test pressure : 27bar
- Burst pressure : ≥55Bar
- Manufactured&Certified to : EN 1866 -1 : 2007 ; EN 1866 -2:2014
- Approx full weight :
- Approval : MED

